

emergency services infection control wear



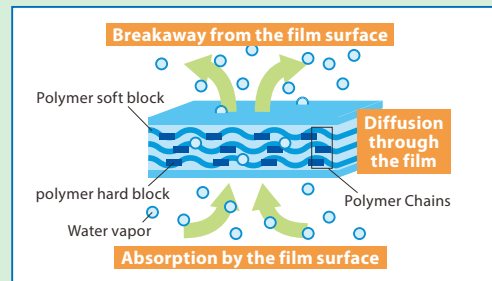
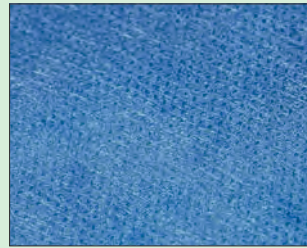
着用イメージ

- Highest barrier level for disposable types.
- Soft material for comfort when emergency transportation services
- As presumed, material is very tough for emergency infection control situations.
- Has wide range of uses from hospital personnel, to D-MATs, to rescue helicopters to rescue centres, etc.

Material Characteristics

Imperforated Film (filter parts)

Unlike traditional porous film types which allows vapor to escape through small holes, imperforated film absorbs and disperses water molecules, giving it an extra layer of infection control throughout the whole wear.



Imperforated Film

AITEX infection control wear uses high quality imperforated film specially lined with ventilation film giving the material its' particular characteristics. This characteristic gives the whole wear an extra barrier of infection control.

Porous Film

Porous film, as the name speaks, is a film made with many tiny pores. The pores are not spread evenly throughout the wear so some parts may be more porous than others, thus being inconsistent in the barrier portion.

AITEX Infection Control Wear Characteristics

High-Level Barrier

- Artificial blood barrier Class-6 (JIS T 8060 D regulation)
- Virus barrier Class-6 (JIS T 8061 D1 regulation)
- In accordance with JIS T 8115 (compliant product for chemical protection coverall type 4/5/6)

Imperforated Film

AITEX uses their original imperforated film for infection control wear material (SFS) with high barrier function which protects deployed emergency services staff.

Toughness Improvement

Our material is 65% stronger than previous material. This toughness prevents tears and gives emergency services staff in the front line less risk of infection.

A emergency services infection control wear for all seasons



B emergency services infection control wear/pants

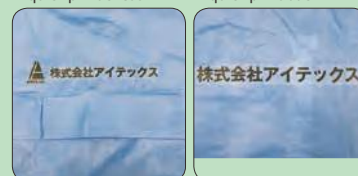


Options

The following items are available if requested

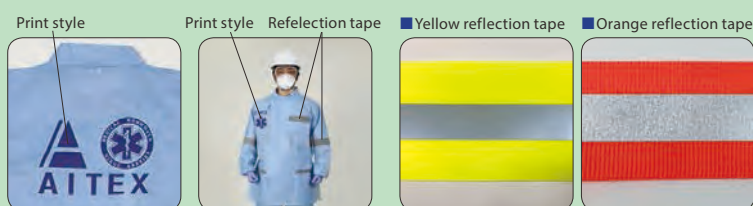
- design creation
- reflection tape
- printing style
- Reflection print

- quick print chest
- quick print back



Quick print: a technique which allows printing without delay

*Quick print dimensions
chest: 20 × 100 mm back: 100 × 300 mm



A emergency service infection control wear for all seasons

Product	Product Number	Size	Quantity	Neck Size	Dress Length	Shoulder Width	Chest Measurement	Sleeve Length	Price
emergency services infection control wear jacket type	SFS-JM	M	50 pieces	55	83.5	49.5	122	60.5	open
	SFS-JL	L		57	89.5	51.5	128	63	
	SFS-JLL	LL		59	89.5	53	132	65	
emergency services infection control wear jumper type	SFS-JSM	M		55	70	49.5	122	60.5	
	SFS-JSL	L		57	74	51.5	128	63	
	SFS-JSLL	LL		59	74	53	132	65	

B emergency service infection control wear/pants

Product	Product Number	Size	Quantity	Waist Size	Hip Size	Inseam	Price
emergency services infection control wear bottoms	SFS-PM	M	50 pieces	72 ~ 92	118	82	open
	SFS-PL	L		78 ~ 98	125.5	85	
	SFS-PLL	LL		86 ~ 106	135	87	

*sizes are approximate

A emergency services infection control wear (cool version)

Front made from standard infection control material.
 High level barrier against artificial blood (Class-6 passed) and viruses (Class-6 passed).
 In accordance with JIS T 8115 (compliant product for chemical protection coverall type 4/5/6)

As a result from AITEX researching their crew all over Japan, the most numerous feedback that came up was heat stress during the summer.

By taking in this feedback, we have used SFS material for the front due to its higher infection risk, while using a material with air permeability for the back.

*jumper types also available (pictured are jacket types)



Cool Verion Characteristics

Non-woven fabric with water-repellency and breathability on back.
 Cool breeze during the summer can be felt through.



*Breathability on the back comes at the cost of lower barrier function.

A emergency services infection control wear (cool version)

Product	Product Number	Size	Quantity	Neck Size	Dress Length	Shoulder Width	Chest Size	Sleeve Length	Price
emergency services infection control wear cool version jacket type	SFSSV-JM	M	50 pieces	55	83.5	49.5	122	60.5	open
	SFSSV-JL	L		57	89.5	51.5	128	63	
	SFSSV-JLL	LL		59	89.5	53	132	65	
emergency services infection control wear cool version jumper type	SFSSV-JSM	M		55	70	49.5	122	60.5	
	SFSSV-JSL	L		57	74	51.5	128	63	
	SFSSV-JSLL	LL		59	74	53	132	65	

*sizes are approximate

A Economic Disinfection Ware

- Reasonable disinfection ware and being clean.
- Prepare both jumper and jacket type.



A Economic Disinfection Ware

Product	Product Number	Size	Quantity	Neck Size	Dress Length	Shoulder Width	Chest Size	Sleeve Length	Price
Economic Disinfection Ware jacket type	E-JC-M	M	50 pieces	55	83.5	49.5	122	60.5	open
	E-JC-L	L		57	89.5	51.5	128	63	
	E-JC-LL	LL		59	89.5	53	132	65	
Economic Disinfection Ware jumper type	E-JP-M	M		55	70	49.5	122	60.5	
	E-JP-L	L		57	74	51.5	128	63	
	E-JP-LL	LL		59	74	53	132	65	

*sizes are approximate

A Economic Disinfection Ware Ultra Cool

- The coolest disinfection ware. (The cool sensation is more than 30% up comparing with our ordinary disinfection ware)
- The part of front and arm are made by the same material with economic disinfection ware, and the part of back is made by the same material with cool operation gown.
- Reducing heat stress very much in summer.



A Economic Disinfection Ware Ultra Cool

Product	Product Number	Size	Quantity	Neck Size	Dress Length	Shoulder Width	Chest Size	Sleeve Length	Price
Economic Disinfection Ware Ultra Cool jacket type	E-JC-M	M	50 pieces	55	83.5	49.5	122	60.5	open
	E-JC-L	L		57	89.5	51.5	128	63	
	E-JC-LL	LL		59	89.5	53	132	65	
Economic Disinfection Ware Ultra Cool jumper type	E-JP-M	M		55	70	49.5	122	60.5	
	E-JP-L	L		57	74	51.5	128	63	
	E-JP-LL	LL		59	74	53	132	65	

*sizes are approximate

A rescue team infection control wear

AITEK has realized the wishes of many rescue team members by manufacturing infection control wear in orange. Material is made from excellent barrier function, medical non-woven fabric.



A rescue team infection control wear

Product	Product Number	Size	Quantity	Neck Size	Dress Length	Shoulder Width	Chest Measurement	Sleeve Length	Price
rescue team infection control wear	RSMMMS-JSM	M	50 pieces	55	83.5	49.5	122	60.5	open
	RSMMMS-JSL	L		57	89.5	51.5	128	63	
	RSMMMS-JSLL	LL		59	89.5	53	132	65	

Product	Product Number	Size	Quantity	Waist Size	Hip Size	Inseam	Price
rescue team infection control wear bottoms	RSMMMS-PM	M	50 pieces	72 ~ 92	118	82	open
	RSMMMS-PL	L		78 ~ 98	125.5	85	
	RSMMMS-PLL	LL		86 ~ 106	135	87	

*sizes are approximate

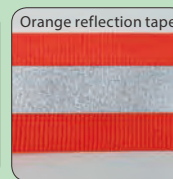
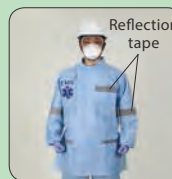
Optional Items

The following items are available if requested.

■ Design creation creation



■ Reflection tape

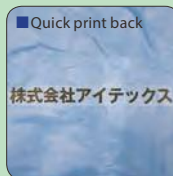


■ Print style



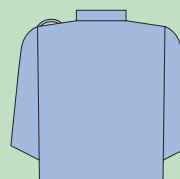
- Immortal ink
- Reflection print

■ Quick print

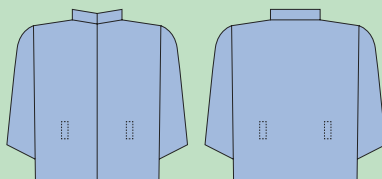


Printing can be done without delay.
 *quick print dimensions
 Chest: 20 × 100 mm
 Back: 100 × 300 mm

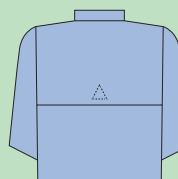
■ Shoulder belt



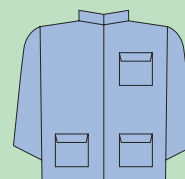
■ Radio equipment belt



■ Unlined back



■ Pockets



A AT-TEX emergency services jackets (re-use)

● Major usages: rescue teams, military, fire department, police department, hospitals and others.

AT-TEX emergency services jackets can be used for outdoor activities and has infection control barrier.

From protection against blood and bodily fluids exposure, also protects against snow, rain, and will support user in many difficult occasions.



jacket type

front



back

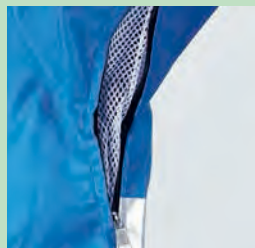


"AT-TEX" boasts artificial blood barrier Class-6 (JIS T 8060 D regulation), virus barrier Class-6 (JIS T 8061 D1 regulation), over 10000 mm water-repellency, as well as moisture permeability. Please contact us for personalized print designs, names, logos, etc.

AT-TEX emergency services jackets characteristics



◀ Reinforced sections for back-pack carrying at shoulders and elbows to enable use under harsh conditions.



Armpits have ventilation mesh to release heat for wearer comfort. ▶

- can be used repeatedly.
- high moisture permeability, water repellency, and high barrier (artificial blood barrier and virus barrier Class-6).
- highly visible reflection tape included. (tape locations: chest pocket, lower left and right pockets, left and right cuffs, back).
- material: polyethylene terephthalate, thermal plastic polyurethane coating.
- water resistance: over 98.1 kPa
- moisture permeability: 1920 g/m²
- water repellency: level 5,5,5
- tensile strength: vertical 1080 horizontal 524 N

Optional hood also available



Detachable fleece lining for comfort during wintery conditions. (sold separately)



A AT-TEX emergency services jackets

Productz	Product Number	Size	Neck Size	Dress Length	Shoulder Width	Chest Measurement	Sleeve Length	Price
AT-TEX emergency support jacket M	AT-TEX-M	M	55	83.5	49.5	122	60.5	open
AT-TEX emergency support jacket L	AT-TEX-L	L	57	89.5	51.5	128	63	
AT-TEX emergency support jacket LL	AT-TEX-LL	LL	59	89.5	53	132	65	
AT-TEX emergency support jacket 3L	AT-TEX-3L	3L	60	91	54	136	66	

*product not disposable